

QUANTIFIABLE EDGES SUBSCRIBER LETTER

ASSESSING MARKET ACTION WITH INDICATORS AND HISTORY

December 26, 2008

Issue 217

Market Overview

Summary of Recent Active Studies (see <http://QuantifiableEdges.blogspot.com> or Letters from listed dates for details)

Study Date	Description	Time span	Bias	Avg Max Move	Avg MM + 1 Std Dev
Active					
December 24, 2008	NR10 Low Vol 10 under 200ma	1-4 days	Bearish	-2.60%	-4.90%
December 23, 2008	Santa Rally	1-5 days	Bullish	1.90%	3.60%
December 22, 2008	Nasdaq Volume Spyx < -5	1-6 days	Bearish	-4.50%	-9.20%
March 17, 2008	Consumer Sentiment Stretch	1-12 months	Bullish		
Dropped Tonight					
December 24, 2008	2 days down in chop	1-3 days	Bullish	1.70%	3.50%

If the avg max move is achieved it will appear in **bold and brown**. If the avg + 1 std deviation is achieved, the study will in **bold italic blue** and will be removed tomorrow.

Short-term Outlook (1-5 days) –neutral – updated 12/26

Christmas Eve and not a creature was stirring – not even the market. Extremely low volume, an extremely tight range and a 1pm pre-holiday closing led to a slightly higher close for the averages. Breadth was about even as well.

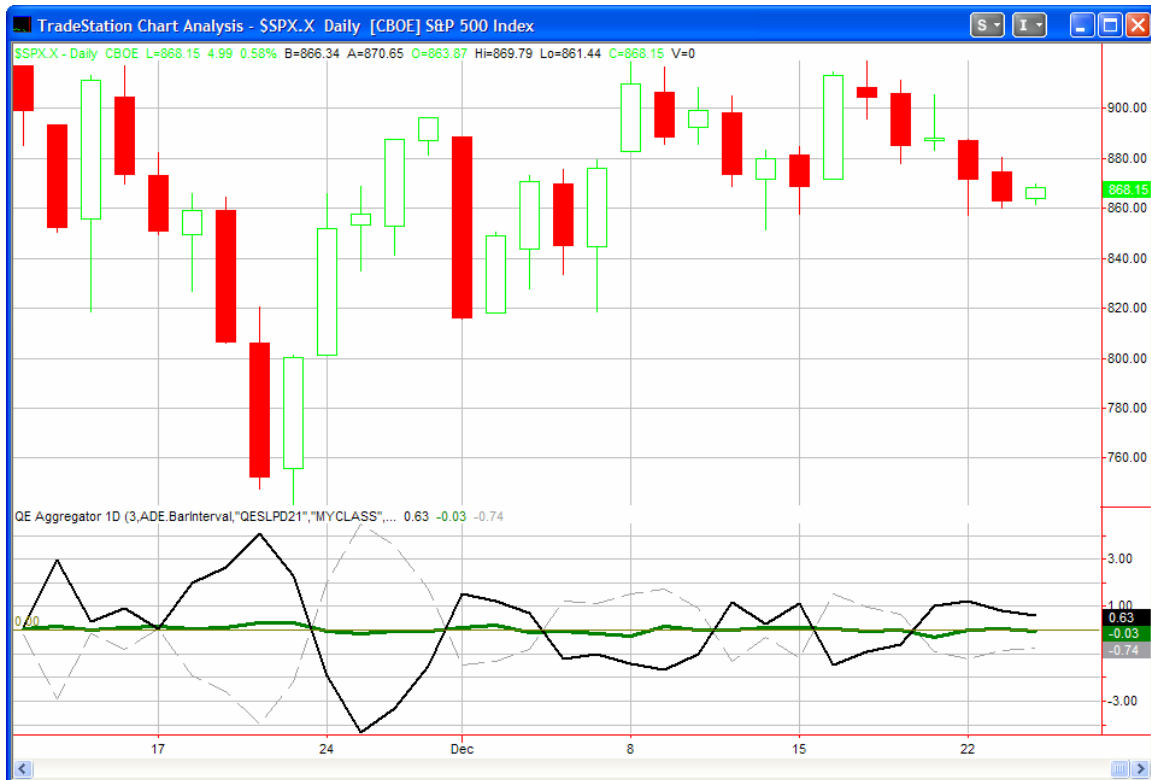
The indicators I look at provided little in the way of interesting readings. Even if there was something notable, I'd be hesitant to make much of it, since it was such a light-volume pre-holiday session.

The slightly higher close meant a win for the “2 Days Down In Chop” system. I've therefore dropped it from the “Active” list. The only short-term bullish study that remains active is the Santa Rally. This called for a Nasdaq close above 1532.35 by Friday the 2nd.

The bearish studies looked at the recent narrow ranges, low volume and low Spyx readings. Also notable were the slightly negative results with some tests that looked at recent VIX action.

Elimination of the “2 Days Down In Chop” strategy has changed the Aggregator a bit.

I have updated the [Aggregator](#) chart below:



The green Aggregator line has now dipped below 0 signaling a negative expectation over the next few days. The black differential line is above 0 indicating the market has underperformed expectations over the last few days. When the lines are on opposite sides of 0 then I normally view that as a “profit-taking” formation. That’s how I’m looking to treat it today. Details in the “active trades” section below.

Intermediate-term Outlook (2 weeks – 2 months)– very slightly bullish -updated 12/22

The market has stumbled higher off its mid-November lows. Some key ingredients for an intermediate-term rally were in place as I discussed at the time. These included extremely oversold conditions followed by sharp rallies higher and bullish divergences. The pullbacks have been fairly mild and the market has worked its way higher.

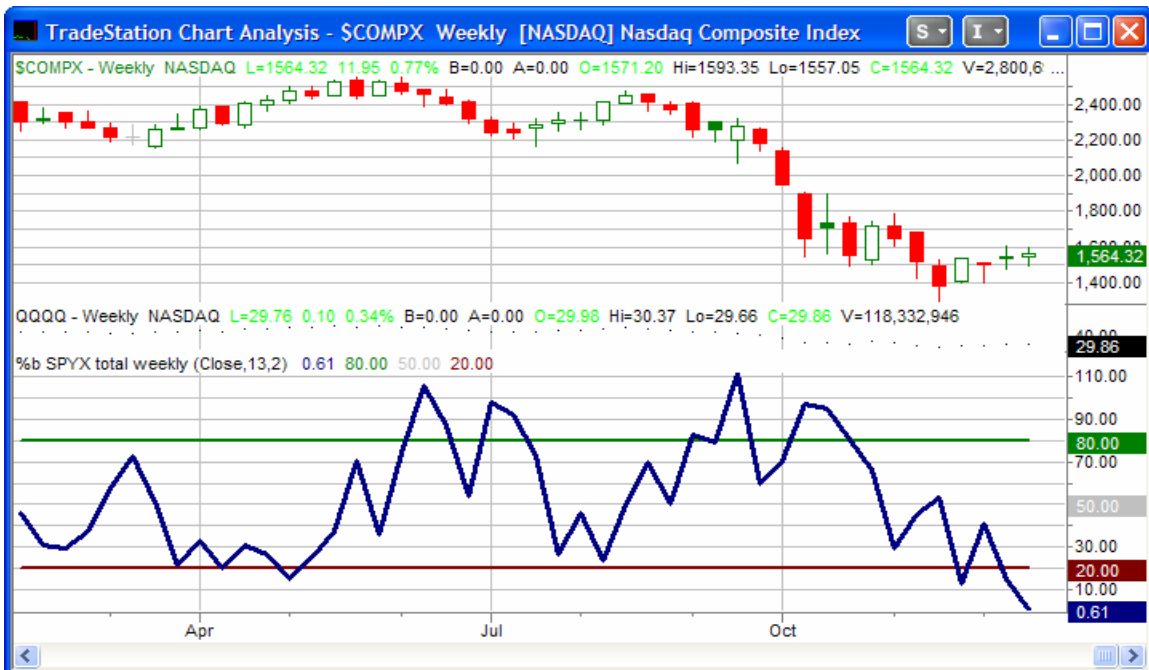
Notable this week was that the S&P closed above its 50-day moving average for the first time in a long time. [I posted a study on the blog a few days ago](#) that looked at other times the S&P had spent a long time below its 50 and then moved above it. The results suggested a trading range was more likely than a strong market move in either direction. Results were also slightly bullish.

Last week I noted the Nasdaq had so far failed to take on a leadership role. This is a bit concerning since the market has achieved over 100% of its gains in the last 38 years while the Nasdaq was leading. As you can see below, the Nasdaq has still failed to take on a leadership role (relative strength line that the bottom is red).



This weekend I looked at other times the market has come off an intermediate-term bottom and after five weeks the Nasdaq had still failed to take on a leadership role. Surprisingly, results were not materially different from those where the Nasdaq quickly began to lead.

I also noticed that it was not only the daily Nasdaq Volume Spyx that posted an extreme reading Friday, but the weekly Nasdaq Volume Spyx closed extremely low as well. I've included a chart of it below:



The 0.61 reading is exceptionally low. I ran a test back to 2000 to see how the Nasdaq performed following readings below 10:

<i>Nas Spyx Weekly closes below 10.</i>											
<i>Buy on close. Sell X days later. \$1mil/trade. 2000-present. (One entry at a time.)</i>											
X Days	Net Profit	Trades	Wins	Losses	% Wins	Avg Win	Avg Loss	W/L Ratio	Profit Factor	Avg Trade	
13	(\$69,942.29)	9	4	5	44.44	\$91,331.55	(\$87,053.70)	1.05	0.84	(\$7,771.37)	
12	\$48,468.49	9	4	5	44.44	\$94,100.62	(\$65,586.80)	1.43	1.15	\$5,385.39	
11	\$167,927.75	9	4	5	44.44	\$108,411.96	(\$53,144.02)	2.04	1.63	\$18,658.64	
10	\$130,824.68	10	6	4	60.00	\$64,729.34	(\$64,387.83)	1.01	1.51	\$13,082.47	
9	(\$58,162.56)	12	6	6	50.00	\$74,164.03	(\$83,857.79)	0.88	0.88	(\$4,846.88)	
8	(\$139,047.47)	12	6	6	50.00	\$54,592.55	(\$77,767.13)	0.70	0.70	(\$11,587.29)	
7	(\$112,341.13)	13	5	8	38.46	\$47,663.04	(\$43,832.04)	1.09	0.68	(\$8,641.63)	
6	(\$177,179.20)	13	4	9	30.77	\$59,619.19	(\$46,184.00)	1.29	0.57	(\$13,629.17)	
5	(\$261,007.76)	14	4	10	28.57	\$56,164.53	(\$48,566.59)	1.16	0.46	(\$18,643.41)	
4	(\$267,695.62)	14	5	9	35.71	\$42,002.62	(\$53,078.75)	0.79	0.44	(\$19,121.12)	
3	(\$28,192.81)	16	8	8	50.00	\$46,429.31	(\$49,953.41)	0.93	0.93	(\$1,762.05)	
2	(\$111,156.21)	18	8	10	44.44	\$40,635.74	(\$43,624.21)	0.93	0.75	(\$6,175.35)	
1	(\$33,565.97)	22	10	12	45.45	\$23,571.01	(\$22,439.67)	1.05	0.88	(\$1,525.73)	

These numbers look a bit bigger than most tests because it was run using a \$1mil/trade instead on \$100k. The Nasdaq has struggled over the following five weeks or so by a fairly sizable amount.

For most tests I only allow one entry at a time. This way there is no double-counting on certain weeks. Sometimes I'll run them and allow multiple positions to be active at one time. I decided to do that here and have posted those results below:

<i>Nas Spyx Weekly closes below 10.</i>											
<i>Buy on close. Sell X days later. \$1mil/trade. 2000-present. (Multiple entries at a time.)</i>											
X Days	Net Profit	Trades	Wins	Losses	% Wins	Avg Win	Avg Loss	W/L Ratio	Profit Factor	Avg Trade	
13	(\$781,862.96)	22	7	15	31.82	\$85,053.99	(\$91,816.06)	0.93	0.43	(\$35,539.23)	
12	(\$613,187.24)	22	8	14	36.36	\$77,306.95	(\$87,974.49)	0.88	0.50	(\$27,872.15)	
11	(\$416,236.65)	22	7	15	31.82	\$105,589.40	(\$77,024.17)	1.37	0.64	(\$18,919.85)	
10	(\$377,068.42)	22	9	13	40.91	\$75,966.77	(\$81,597.64)	0.93	0.64	(\$17,139.47)	
9	(\$228,620.32)	22	10	12	45.45	\$72,780.38	(\$79,702.01)	0.91	0.76	(\$10,391.83)	
8	(\$290,904.91)	22	10	12	45.45	\$56,955.03	(\$71,704.60)	0.79	0.66	(\$13,222.95)	
7	(\$147,928.86)	22	8	14	36.36	\$53,951.24	(\$41,395.63)	1.30	0.74	(\$6,724.04)	
6	(\$265,528.77)	22	7	15	31.82	\$58,952.31	(\$45,212.99)	1.30	0.61	(\$12,069.49)	
5	(\$343,882.18)	22	7	15	31.82	\$56,905.58	(\$49,481.42)	1.15	0.54	(\$15,631.01)	
4	(\$421,294.95)	22	8	14	36.36	\$45,679.29	(\$56,194.95)	0.81	0.46	(\$19,149.77)	
3	(\$197,222.46)	22	10	12	45.45	\$43,699.31	(\$52,851.29)	0.83	0.69	(\$8,964.66)	
2	(\$154,309.00)	22	10	12	45.45	\$38,003.11	(\$44,528.34)	0.85	0.71	(\$7,014.05)	
1	(\$33,565.97)	22	10	12	45.45	\$23,571.01	(\$22,439.67)	1.05	0.88	(\$1,525.73)	

Results appear even more negative here. This isn't surprising considering there are some bad weeks that are being double counted.

Overall, the market is still stair-stepping it way higher. We're near a seasonally bullish time of year. The government has indicated it is going to do whatever it takes to get the economy moving again. Aside from the Nasdaq Volume Spyx readings I'm not seeing much that would suggest a selloff is imminent. It does appear unlikely that the market is just going to blast off from here, though. Right now a range bound scenario appears the

most likely to me. If forced to pick a direction beyond a few weeks, I'd likely lean bullish.

Catapult and Capitulative Breadth Statistics

(Catapult Presentation Part 1) (Catapult Presentation Part 2)

Open Catapult Trades

none

Catapult for ETF's Trades

None

Broad Market Large Cap CBI – 0

Sector CBI Breakdown (% of stocks with active catapult triggers within each sector.)

Index	ETF	CBI %	Index	ETF	CBI %
DJ US Broker Dealers	IAI	0.00	DJ US Energy	IYE	0.00
DJ US Insurance Index	IAK	0.00	DJ US Financial	IYF	0.34
DJ US Regional Banks	IAT	1.25	DJ US Financial Services	IYG	0.70
DJ US Utilities	IDU	0.00	DJ US Healthcare	IYH	0.00
DJ US Oil&Gas Expl & Prod	IEO	0.00	DJ US Industrial Sector	IYJ	0.38
DJ US Oil Equip & Svcs	IEZ	0.00	DJ US Consumer Goods	IYK	0.00
DJ US Pharmaceuticals	IHE	0.00	DJ US Basic Materials	IYM	0.00
DJ US Healthcare Providers	IHF	0.00	DJ US Real Estate	IYR	0.00
DJ US Medical Devices	IHI	0.00	DJ US Transportation	IYT	0.00
DJ US Aerospace & Defense	ITA	0.00	DJ US Technology Sector	IYW	0.00
DJ US Home Construction	ITB	0.00	DJ US Telecommunications	IYZ	0.00
DJ US Consumer Svcs	IYC	0.00	Nasdaq 100	QQQQ	0.00

No capitulative action evident.

Additional New Trade Ideas

None tonight. (There were a few triggers on the triggers page but nothing that excites me terribly tonight.)

Active Trades Table

Symbol	Entry Date	Entry Price	Current Pr	% Gain/Lo	Stop	Notes
IEF(s)	12/19/2008	\$99.85	\$99.11	0.74%		cover @ \$99.12 limit
QQQQ(1/4)	12/23/2008	\$29.06	\$29.14	0.28%		sell @ \$29.12 limit

I'm looking to exit the QQQQ trade. The bounce has been weak and the Aggregator turned south. Therefore I'll get out and wait for the next index edge.

IEF I will also look to cover. While it hasn't quite reached its 10-day ma target price, it has now dropped for 4 days in a row. It's reaching a point where a move back up would start to become more likely. I'd prefer to just look for an exit.

This report has been prepared by Hanna Capital Management, LLC and is provided for information purposes only. Under no circumstances is it to be used or considered as an offer to sell, or a solicitation of any offer to buy securities. While information contained herein is believed to be accurate at the time of publication, we make no representation as to the accuracy or completeness of any data, studies, or opinions expressed and it should not be relied upon as such. Robert Hanna, Hanna Capital Management, LLC or clients of Hanna Capital Management, LLC may have positions or other interests in securities (including derivatives) directly or indirectly which are the subject of this report. This report is provided solely for the information of Hanna Capital Management, LLC clients and prospects who are expected to make their own investment decisions without reliance upon this report. Neither Hanna Capital Management, LLC nor any officer or employee of Hanna Capital Management, LLC accepts any liability whatsoever for any direct or consequential loss arising from any use of this report or its contents. This report may not be reproduced, distributed or published by any recipient for any purpose without the prior express consent of Hanna Capital Management, LLC.

Copyright © 2008 Hanna Capital Management, LLC